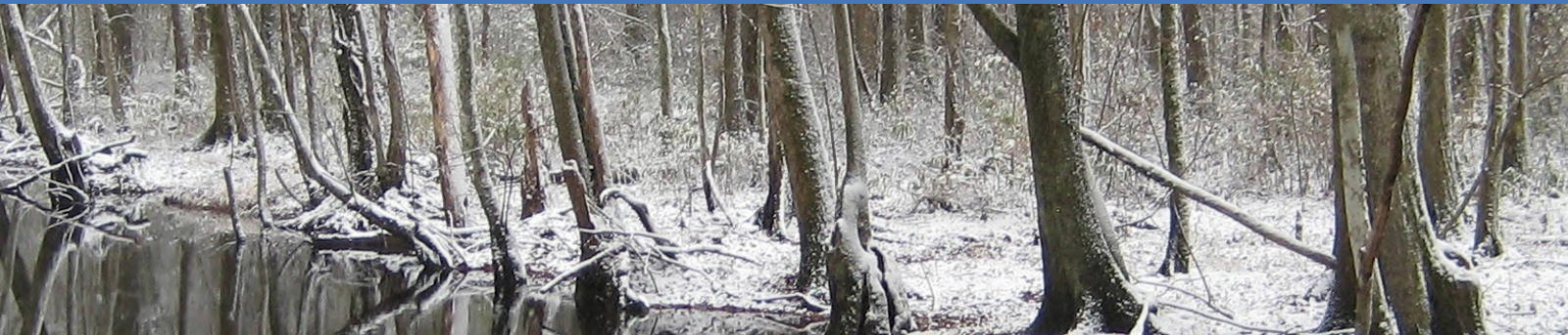


Conservation Reserve Program

CP25

RARE AND DECLINING HABITAT

Wildlife Habitat | Soil Health | Water Quality



Why Choose CRP? You Benefit Land, Water, and Wildlife.

The Conservation Reserve Program (CRP) provides farmers and landowners with various enrollment opportunities to achieve many farming, ranching, and conservation goals. Whatever the challenge—soil conservation, water quality protection, or wildlife habitat enhancement—CRP is a proven land performance and management solution.

Why Rare and Declining Habitat Restoration?

As land is converted for agricultural uses, many habitats are increasingly rare. Restoring declining habitats such as tallgrass prairie, wet meadows, and sage steppe with appropriate native plant species provides a sustainable solution. Establishing rare habitat:

- Rehabilitates functions of degraded habitat
- Provides food, nesting, and escape cover for wildlife
- Increases vegetation diversity
- Reduces soil erosion
- Protects water quality

Financial Benefits

CP25 participants receive:

- 10–15 years of annual rental payments
- 50% cost-share assistance for establishment costs

Additional incentives may be available in your state under the Conservation Reserve Enhancement Program (CREP).

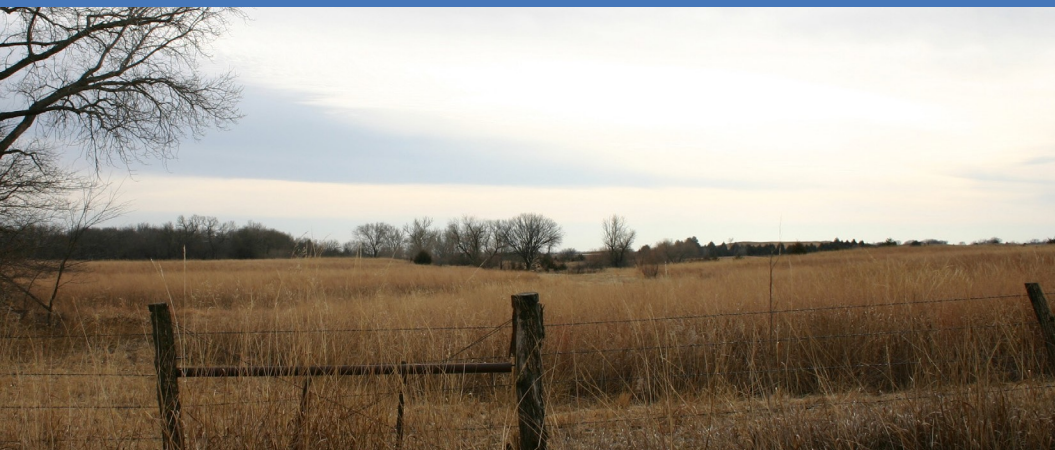
CP25 is offered in general sign-up. For more information on CRP sign-up types, visit fsa.usda.gov.

Photo provided by USFWS



Farm Service Agency

USDA is an equal opportunity provider and employer



Eligible Land

- Planted or considered planted at least 4 out of 6 years between 2012 and 2017
- Capable of being planted to an agricultural commodity
- Compliant with USDA's highly erodible land and wetland provisions

Practice Requirements

- Prepare the site for growth of selected species
- Establish and maintain permanent vegetative cover
- Apply nutrients as needed to ensure growth
- Control noxious weeds and other undesirable plants, insects, and pests

Owner/Operator Eligibility

Participants must:

- Have owned or operated the land for at least 12 months prior to program sign-up
- Be in control of the land for the length of the contract
- Meet USDA payment eligibility provisions

FSA will ultimately determine participant and land eligibility.

Obligations

Participants will:

- Not harvest or graze the practice area except under certain approved conditions
- Work with USDA-approved conservationist to develop a conservation plan
- Perform periodic management activities according to the conservation plan
- Complete practice establishment within 12 months of the effective date of the contract

Proven Conservation Benefits

- In prime habitat, a 4% increase in CRP vegetation is associated with a 22% increase in pheasant counts
- CRP reduced nutrient losses in FY 2020 by an estimated 400 million pounds of nitrogen and 78 million pounds of phosphorus
- In 2020, CRP lowered greenhouse gas emissions by the equivalent of 30 million metric tons of CO₂—the same benefit as taking nearly 6 million cars off the road

For more information about FSA and its programs, visit fsa.usda.gov or contact your local FSA office. To find your local FSA office, visit farmers.gov/service-locator.

Photos provided by FSA Kansas, USFWS Steve Hillebrand, USFWS Lamar Gore, respectively