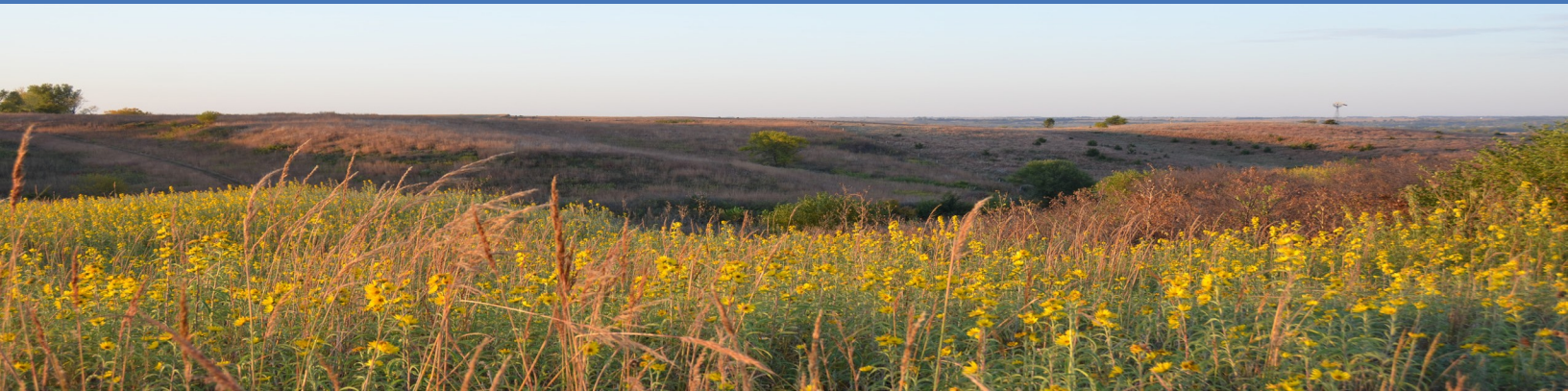


# Conservation Reserve Program

CP42

## POLLINATOR HABITAT

Wildlife Habitat | Soil Health | Erosion Control



## Why Choose CRP? You Benefit Land, Water, and Wildlife.

The Conservation Reserve Program (CRP) provides farmers and landowners with various enrollment opportunities to achieve many farming, ranching, and conservation goals. Whatever the challenge—soil conservation, water quality protection, or wildlife habitat enhancement—CRP is a proven land performance and management solution.

## Why Pollinator Habitat?

Agricultural productivity relies on pollinators—including honeybees, native bees, butterflies, moths, beetles, flies, wasps, birds, and bats—to pollinate one-third of food products and more than 80% of all plants. Establishing pollinator habitat:

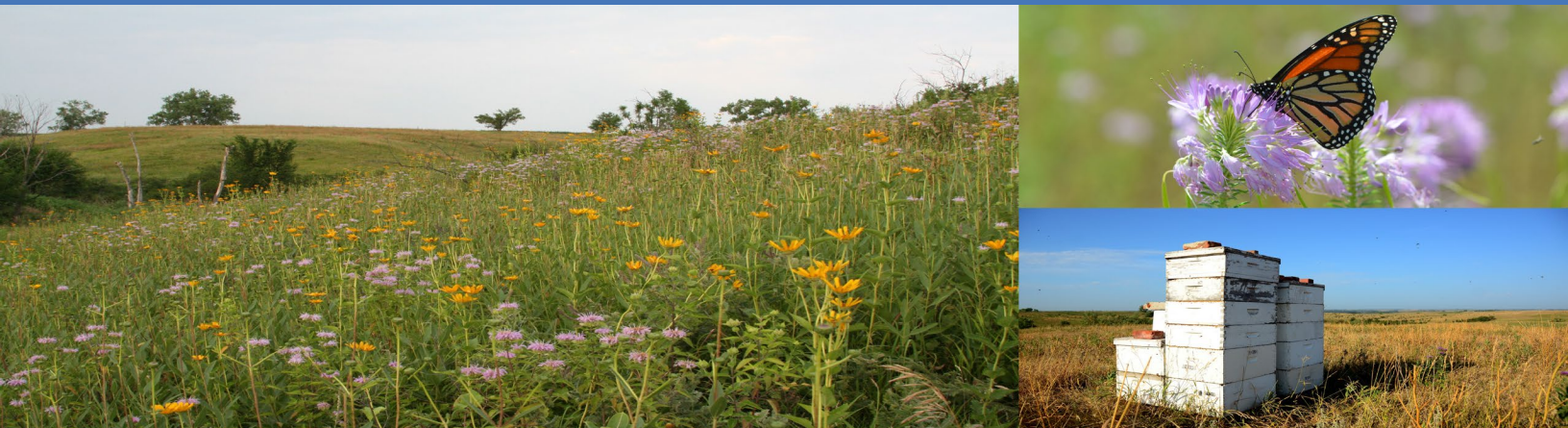
- Boosts crop yields
- Protects soil productivity
- Creates habitat for other wildlife
- Improves water quality by intercepting sediment and nutrients
- Sequesters carbon

CP42 is offered in both general and continuous sign-up. For more information on CRP sign-up types, visit [fsa.usda.gov](https://fsa.usda.gov).

## Financial Benefits

### CP42 participants receive:

- 10 years of annual rental payments
- 50% cost-share assistance for establishment costs
- Under continuous sign-up, a signing incentive payment (SIP) and a practice incentive payment (PIP)



## Eligible Land

- Planted or considered planted at least 4 out of 6 years between 2012 and 2017
- Capable of being planted to an agricultural commodity
- Compliant with USDA's highly erodible land and wetland provisions

## Practice Requirements

- Prepare a habitat area of at least 0.5 acres
- Establish and maintain block or strip planting at least 20 feet wide
- Control noxious weeds and other undesirable plants, insects, and pests
- Additional technical requirements may apply

## Owner/Operator Eligibility

Participants must:

- Have owned or operated the land for at least 12 months prior to program sign-up
- Be in control of the land for the length of the contract
- Meet USDA payment eligibility provisions

*FSA will ultimately determine participant and land eligibility.*

## Obligations

Participants will:

- Not harvest or graze the practice area except under certain approved conditions
- Work with USDA-approved conservationist to develop a conservation plan
- Perform periodic management activities according to the conservation plan
- Complete practice establishment within 12 months of the effective date of the contract

## Proven Conservation Benefits

- Insect pollination is critical to food security—honeybees enable the production of over 90 different commercial crops in North America
- Honeybee-pollinated commodities account for \$15 billion in annual U.S. agricultural production
- Habitat attractive to pollinators will also attract beneficial insects that are predators of crop pests

*For more information about FSA and its programs, visit [fsa.usda.gov](http://fsa.usda.gov) or contact your local FSA office. To find your local FSA office, visit [farmers.gov/service-locator](http://farmers.gov/service-locator).*