



Farm Service Agency

Conservation Reserve Program (CRP) State Acres For wildlife Enhancement (SAFE)

FACTSHEET
December 2020

New York State CRP SAFE Project

Owners and operators of certain cropland in designated geographic areas may offer eligible land into CRP enrollment.

New York has targeted certain areas within the State as key areas with the primary goal of benefiting grassland birds. Managing and conserving these targeted grasslands areas through CRP SAFE and complementing other grassland habitat conservation efforts being put forth by New York State Department of Environmental Conservation, will increase connectivity between conserved grassland habitats and provide not only nesting but overwinter sites.

Targeted species include the Bobolink, eastern meadowlark and the savannah sparrow. these species are known nesters in converted agricultural land.

Benefits

Short-term benefits will create colonization of new fields by grassland birds as well as detection of American kestrels utilizing fields. CRP SAFE acreage will also be utilized by pollinating insects and non-target wildlife while reducing erosion, soil loss and runoff of the fields.

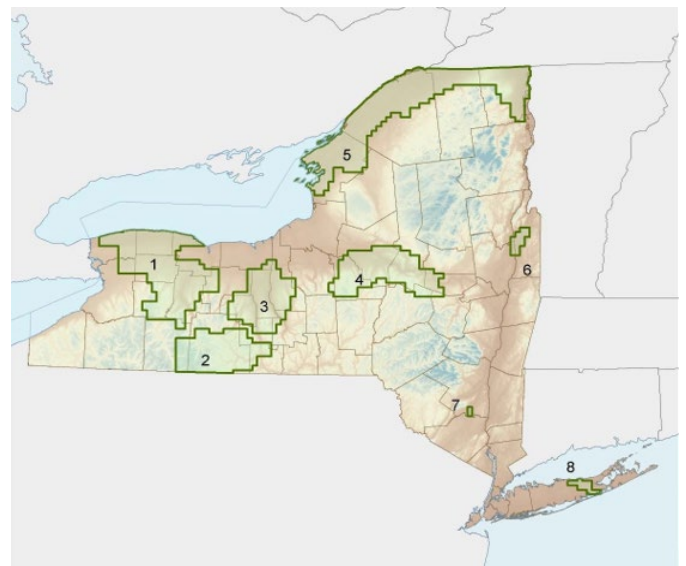
How the Program Works

Enrollment into NY CRP SAFE will be held under general enrollment. Producers will have the opportunity to offer land for CRP SAFE during the annual enrollment period for general CRP signup. Offers located within the targeted areas will receive extra ranking points under the Environment Benefits Index (EBI) to assist offers in being accepted into CRP.



Targeted areas for NY SAFE

Counties completely or partially included in the program: Allegany, Cayuga, Chemung, Clinton, Cortland, Erie, Essex, Franklin, Fulton, Genesee, Herkimer, Jefferson, Livingston, Madison, Monroe, Montgomery, Niagara, Oneida, Onondaga, Ontario, Orleans, Otsego, Saratoga, Schoharie, Schuyler, Seneca, St. Lawrence, Steuben, Suffolk, Tompkins, Ulster, Washington, Warren, Wayne, Wyoming and Yates.





New York CRP SAFE

Eligible Producers

A producer must have owned or operated the land for at least 12 months prior to closing the CRP enrollment period, unless:

- The new owner acquired the land due to the previous owner's death;
- The ownership change occurred due to foreclosure where the owner exercised a timely right of redemption in accordance with state law; or
- The circumstances of the acquisition present adequate assurance to FSA that the new owner did not acquire the land for the purpose of placing it in CRP.

Eligible Land

To be eligible for the CRP general enrollment period, land must be cropland (including field margins) this is planted, or considered planted, to an agricultural commodity four of the six crop years from 2012 to 2017, and be physically and legally capable of being planted (no planting restrictions due to an easement or other legally binding instrument) in a normal manner to an agricultural commodity. Alfalfa or other multiyear grasses and legumes grown in a rotation not to exceed 12 years may also be eligible.

In addition to the eligible land requirements for the CRP general enrollment period, cropland must also be located within one of the SAFE priority zones located within the state.

Conservation Plan Requirements

Conservation Plans will be developed by NYS DEC. Plans will be designed to either establish permanent introduced grasses and legumes or permanent native grasses, depending which the producer offers during enrollment.

Management of the CRP acreage will be included in the conservation plan. Management will be designed

to create different diversity of grass heights, which provides a habitat diversity. Acreage must not be disturbed after April 1 and before August 1 in order to protect nesting birds. Management will be scheduled to have acreage mowed a minimum of two times through the life of the 10-contract.

To allow overwintering and migratory bird use, fields should not be disturbed during the fall, winter, or spring; although crossing with vehicles, hunting and other less intrusive activities are allowed.

Habitat type to be restored to introduced grasses and legumes or native grasses, when appropriately managed, can provide nest, brood-rearing, foraging, and overwintering habitat for the SAFE targeted bird species.

Rental Payments

In return for following an approved CRP conservation plan, FSA provides annual rental payments to participants based on 75 percent of the NASS estimated soil rental rate as determined by FSA for the life of the agreement.

Cost-Share Assistance

FSA provides cost-share assistance to participants who establish approved practices on eligible land in an amount that is not more than 50 percent of the participants' costs in establishing approved practices.

There is no cost-share for management mowing.

More Information

This fact sheet is for informational purposes only; other restrictions may apply. To find more information about CRP Grasslands, visit www.fsa.usda.gov/crp. For more details on FSA conservation programs, visit www.fsa.usda.gov/conservation or contact your local FSA office. To locate the nearest FSA office or USDA service center, visit <http://offices.usda.gov>.